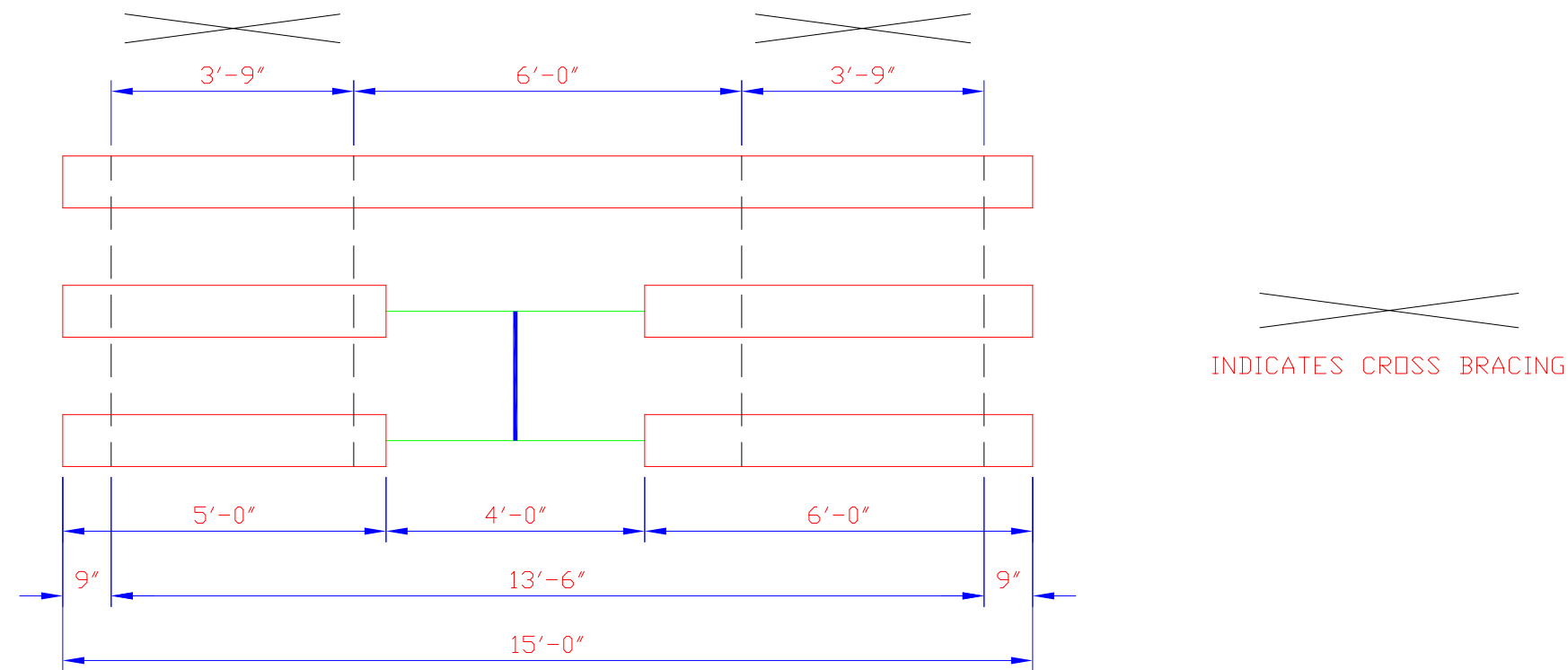
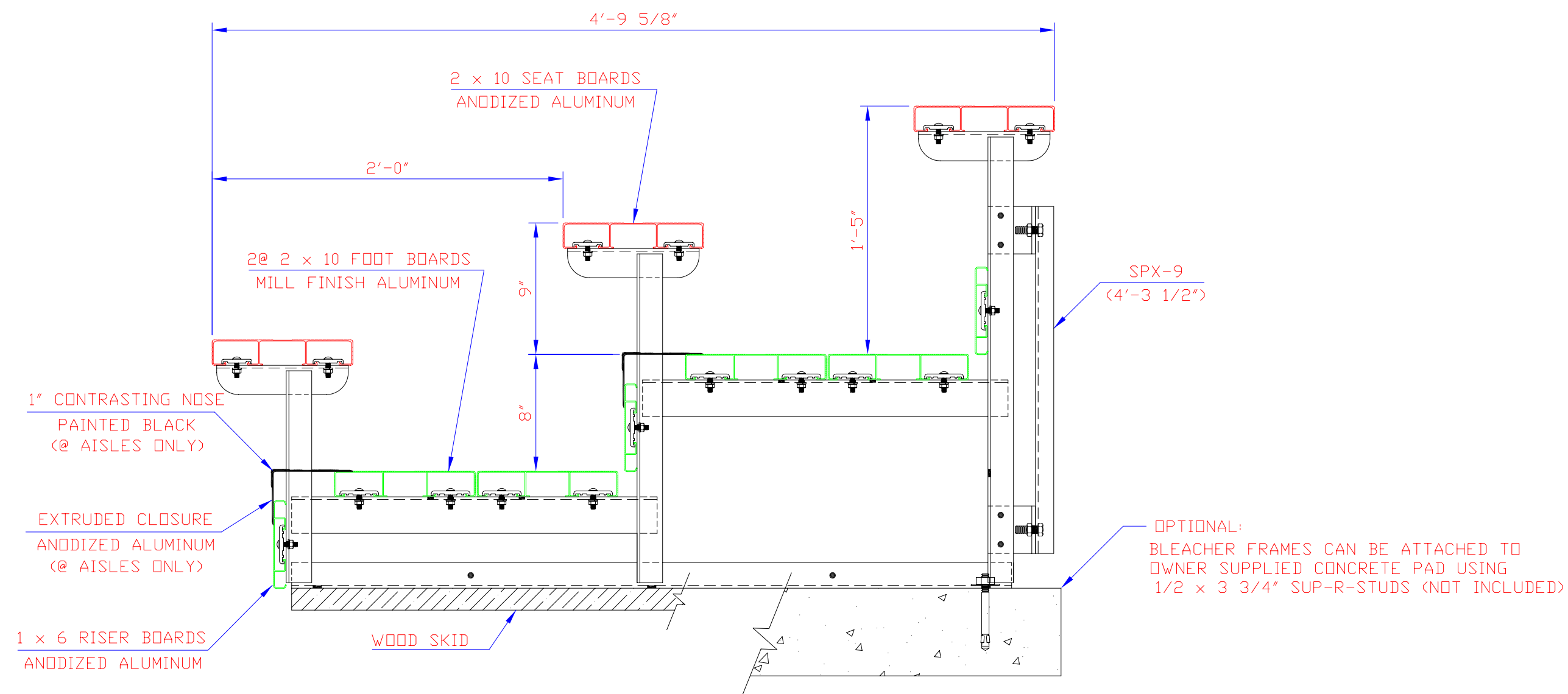


LETTER	REVISIONS	BY	DATE



INDICATES CROSS BRACING

PLAN OF BLEACHER
(1/4 SCALE)



SEATING CAPACITY
@ 18" PER SEAT = 24

END ELEVATION

ALL FRAMING ANGLES 1 3/4 x 1 3/4 x 3/16"
ALL STRUTS & BRACING ANGLES 1 1/4 x 1 1/4 x 3/16"
ALL ALUMINUM FOOT BOARD ANGLES 2 1/2 x 2 x 3/16"
UNLESS NOTED

ALUMINUM 6061-T6 UNDERSTRUCTURE

THIS DRAWING INCLUDING THE PRINCIPLES OF DESIGN IS THE PROPERTY OF AND IS SUBMITTED BY E & D SPECIALTY STANDS, INC. WITH THE AGREEMENT THAT IT IS NOT TO BE REPRODUCED, COPIED OR LOANED IN PART OR WHOLE, NOT TO BE USED IN ANY MANNER THAT MAY CONSTITUTE A DETRIMENT DIRECTLY OR INDIRECTLY TO E & D SPECIALTY STANDS, INC. ACCEPTANCE OF THIS DRAWING WILL BE CONSTRUED AS AN AGREEMENT TO THE ABOVE.

SCALE 1 1/2"=1'	REFERENCE DWG.
DRAWN BY D.K.	CHECKED BY
DATE 1/30/04	DATE

END ELEVATION & PLAN VIEW
3 ROW PORTABLE w/CENTER AISLE
RISERS & (2) FOOT BOARDS

E & D SPECIALTY STANDS, INC.
NORTH COLLINS, NEW YORK

P324-15-AL