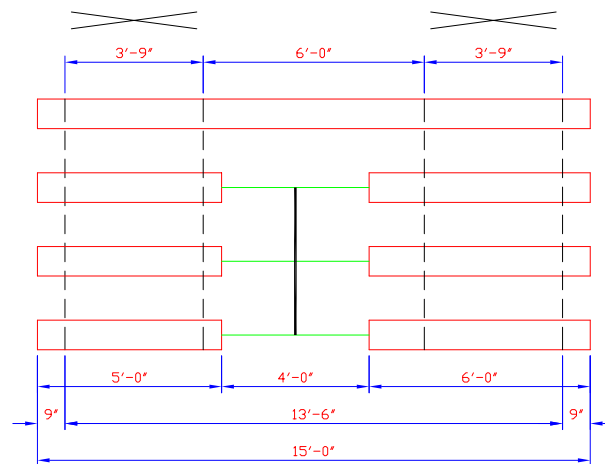
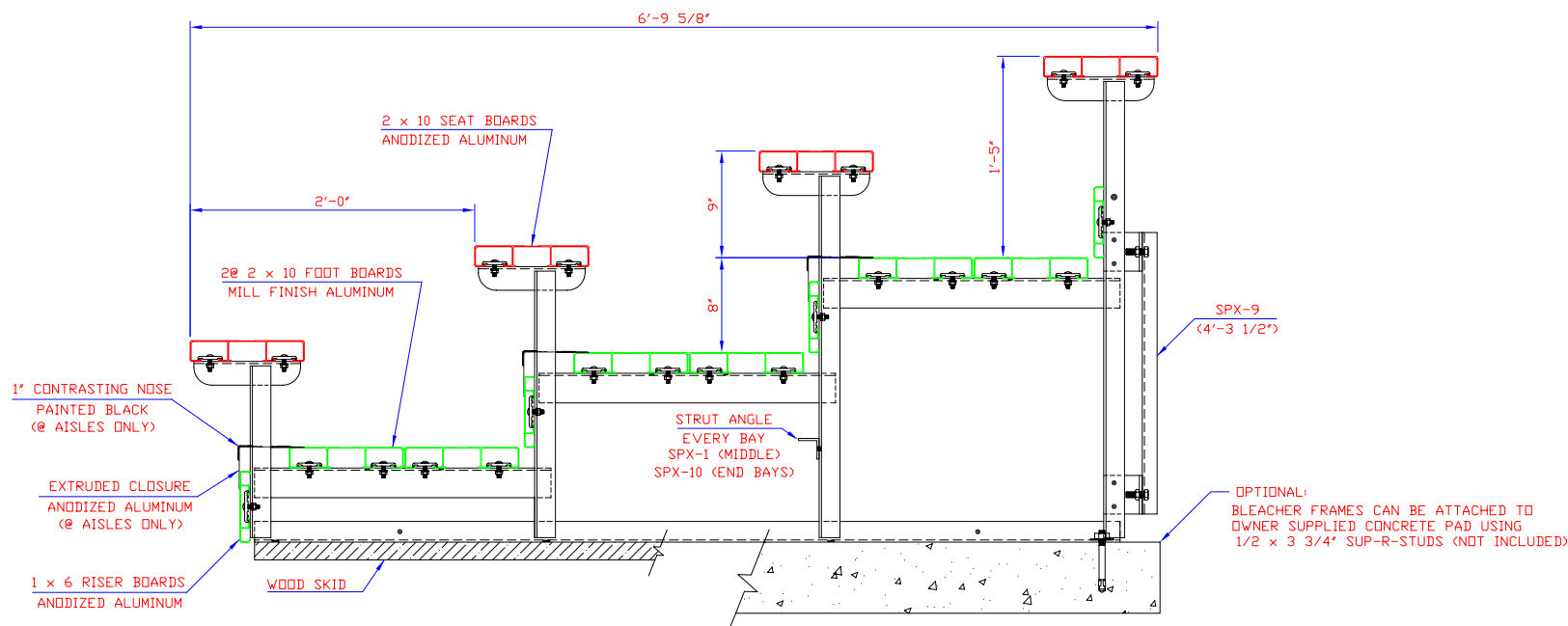


LETTER	REVISIONS	BY	DATE



INDICATES CROSS BRACING

PLAN OF BLEACHER  
(1/4 SCALE)



SEATING CAPACITY  
@ 18" PER SEAT = 31

END ELEVATION

ALL FRAMING ANGLES 1 3/4 x 1 3/4 x 3/16"  
ALL STRUTS & BRACING ANGLES 1 1/4 x 1 1/4 x 3/16"  
ALL ALUMINUM FOOT BOARD ANGLES 2 1/2 x 2 x 3/16"  
UNLESS NOTED

<b>ALUMINUM 6061-T6 UNDERSTRUCTURE</b> THIS DRAWING INCLUDING THE PRINCIPLES OF DESIGN IS THE PROPERTY OF AND IS SUBMITTED BY E & D SPECIALTY STANDS, INC. WITH THE AGREEMENT THAT IT IS NOT TO BE REPRODUCED, COPIED OR LOANED IN PART OR WHOLE, NOT TO BE USED IN ANY MANNER THAT MAY CONSTITUTE A DETRIMENT DIRECTLY OR INDIRECTLY TO E & D SPECIALTY STANDS, INC. ACCEPTANCE OF THIS DRAWING WILL BE CONSTRUED AS AN AGREEMENT TO THE ABOVE.	SCALE	REFERENCE DWG.	<b>END ELEVATION &amp; PLAN VIEW</b> <b>4 ROW PORTABLE w/CENTER AISLE</b> <b>RISER &amp; (2) FOOT BOARDS</b>
	1 1/2"=1'		
	DRAWN BY	CHECKED BY	
	D.K.		
DATE	DATE		
2/2/04			

E & D SPECIALTY STANDS, INC.  
NORTH COLLINS, NEW YORK

P424-15-AL