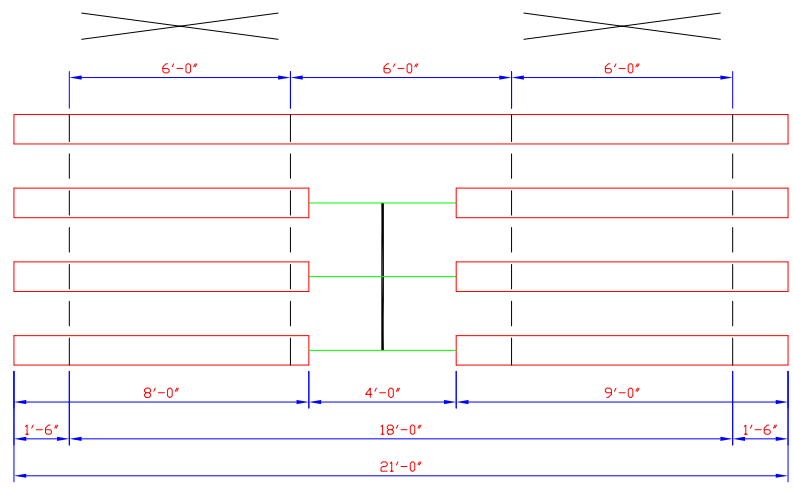
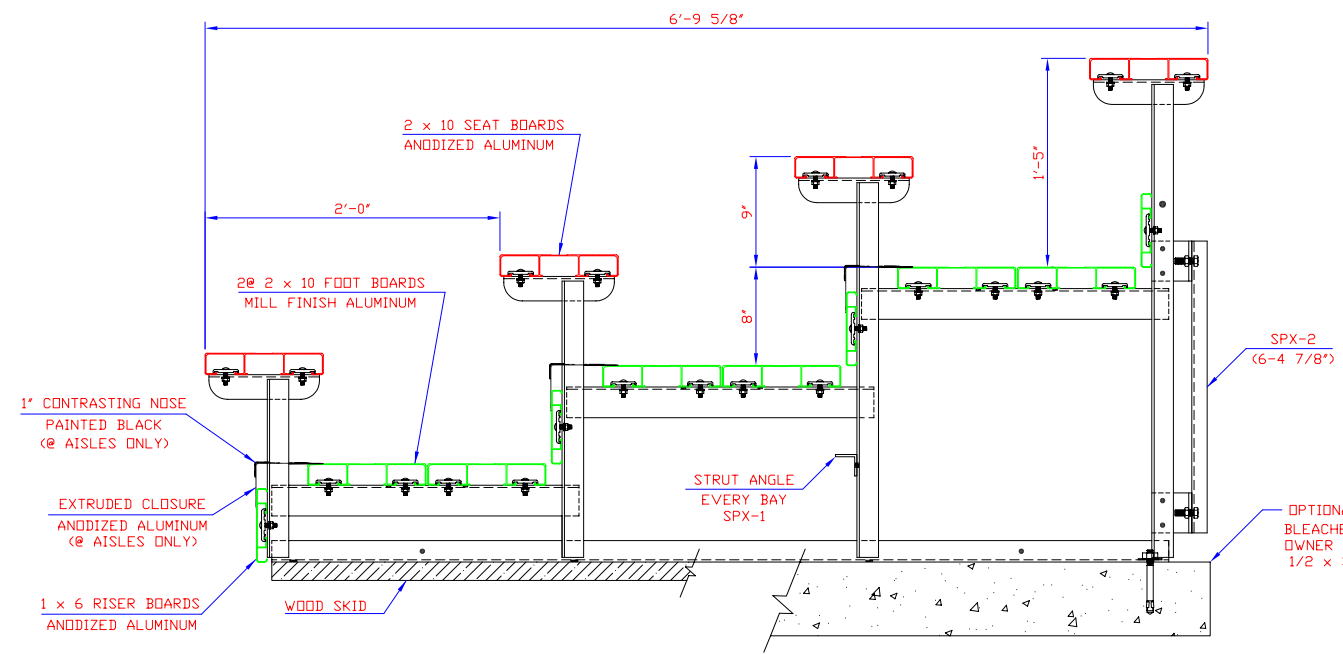


LETTER	REVISIONS	BY	DATE



INDICATES CROSS BRACING

PLAN OF BLEACHER
(1/4 SCALE)



SEATING CAPACITY
@ 18" PER SEAT = 47

END ELEVATION

ALL FRAMING ANGLES 1 3/4 x 1 3/4 x 3/16"
 ALL STRUTS & BRACING ANGLES 1 1/4 x 1 1/4 x 3/16"
 ALL ALUMINUM FOOT BOARD ANGLES 2 1/2 x 2 x 3/16"
 UNLESS NOTED

ALUMINUM 6061-T6 UNDERSTRUCTURE THIS DRAWING INCLUDING THE PRINCIPLES OF DESIGN IS THE PROPERTY OF AND IS SUBMITTED BY E & D SPECIALTY STANDS, INC. WITH THE AGREEMENT THAT IT IS NOT TO BE REPRODUCED, COPIED OR LOANED IN PART OR WHOLE, NOT TO BE USED IN ANY MANNER THAT MAY CONSTITUTE A DETRIMENT DIRECTLY OR INDIRECTLY TO E & D SPECIALTY STANDS, INC. ACCEPTANCE OF THIS DRAWING WILL BE CONSTRUED AS AN AGREEMENT TO THE ABOVE.	SCALE	REFERENCE DWG.	END ELEVATION & PLAN VIEW 4 ROW PORTABLE w/CENTER AISLE RISERS & (2) FOOT BOARDS
	1/12"=1'		
	DRAWN BY	CHECKED BY	
	D.K.		
DATE	DATE		E & D SPECIALTY STANDS, INC. NORTH COLLINS, NEW YORK
2/2/04		P424-21-AL	