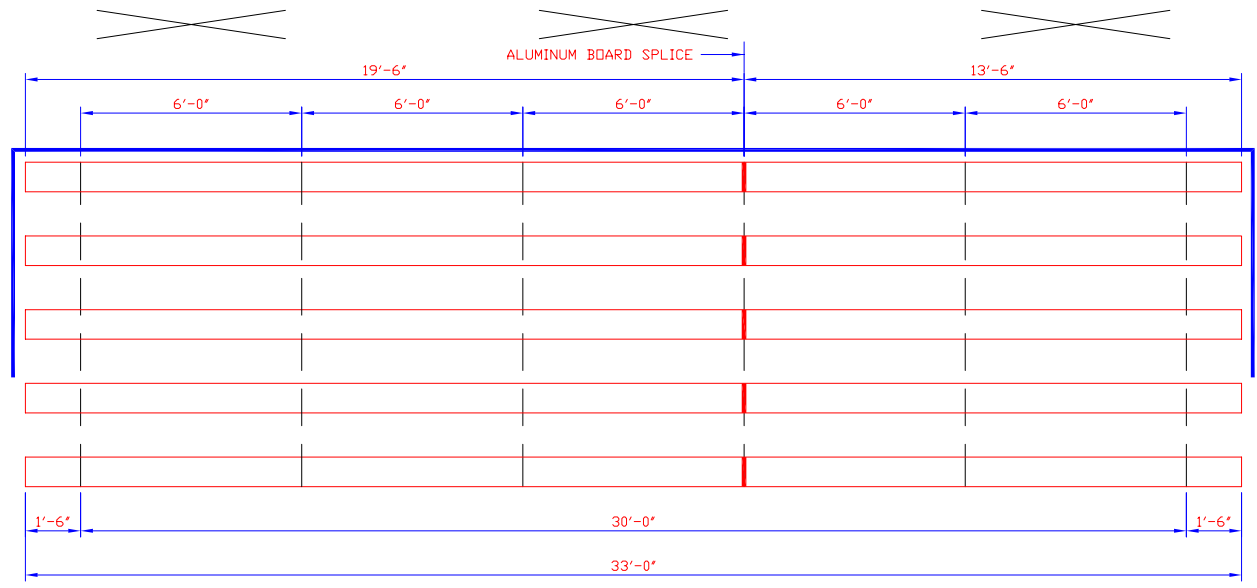
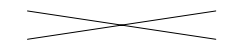
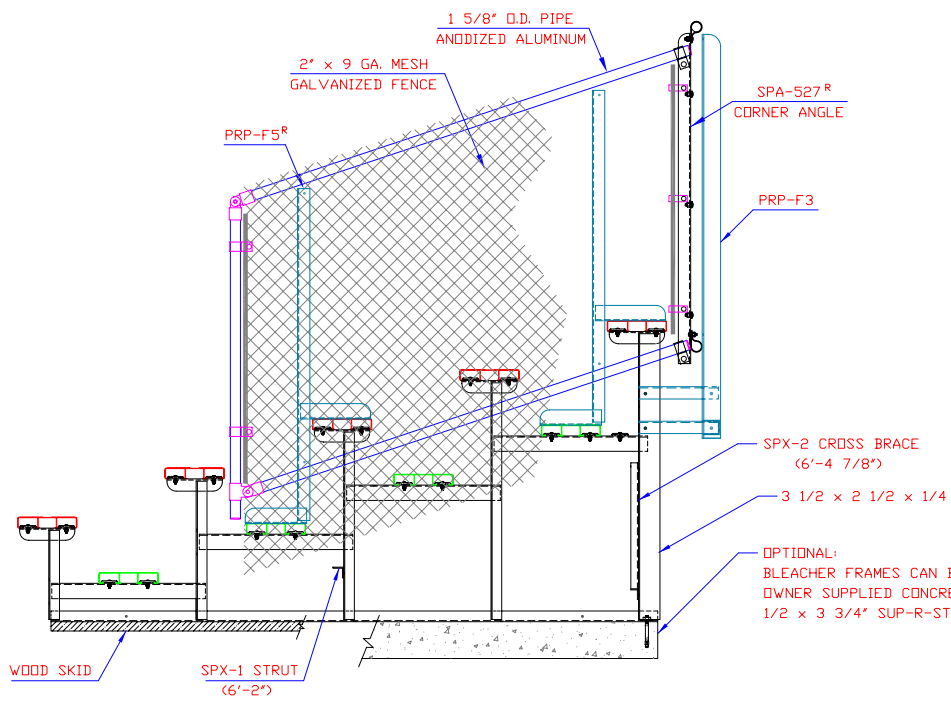


LETTER	REVISIONS	BY	DATE



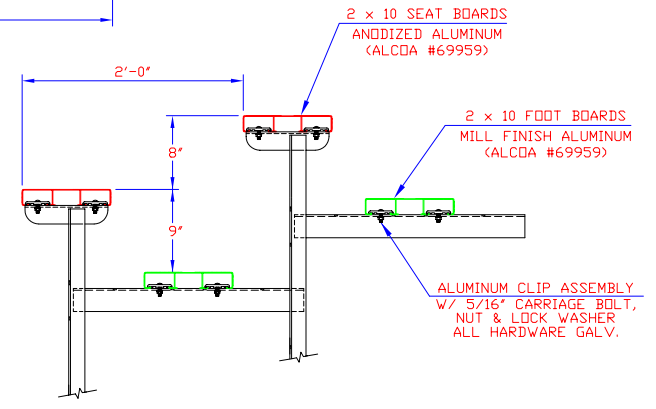
**PLAN OF BLEACHER**  
1/2 SCALE

  
INDICATES CROSS BRACING  
ALL STRUTS CONTINUOUS



**END ELEVATION**

ALL FRAMING & BRACING ANGLES 1 3/4 x 1 3/4 x 3/16  
ALL STRUTS & BRACING ANGLES 1 1/4 x 1 1/4 x 3/16  
ALL ALUMINUM FOOT BOARD ANGLES 2 1/2 x 2 x 3/16  
UNLESS NOTED



**PLANK ARRANGEMENT**  
FULL PLANK DECK SERIES

SEATING CAPACITY  
@ 18" PER SEAT = 110

<b>ALUMINUM 6061-T6 UNDERSTRUCTURE</b> <small>THIS DRAWING INCLUDING THE PRINCIPLES OF DESIGN IS THE PROPERTY OF AND IS SUBMITTED BY E &amp; D SPECIALTY STANDS, INC. WITH THE AGREEMENT THAT IT IS NOT TO BE REPRODUCED, COPIED OR LOANED IN PART OR WHOLE, NOT TO BE USED IN ANY MANNER THAT MAY CONSTITUTE A DETRIMENT DIRECTLY OR INDIRECTLY TO E &amp; D SPECIALTY STANDS, INC. ACCEPTANCE OF THIS DRAWING WILL BE CONSTRUED AS AN AGREEMENT TO THE ABOVE.</small>	SCALE	REFERENCE DWG.	<b>END ELEVATION &amp; PLAN VIEW</b> <b>5 ROW UNIT</b> <b>STANDARD PORTABLE</b> <b>P524-33-H</b>
	3/4"=1'-0"		
	DRAWN BY	CHECKED BY	
	D.K.		
DATE	DATE		
3/11/04			
<b>E &amp; D SPECIALTY STANDS, INC.</b> <b>NORTH COLLINS, NEW YORK</b>			